



TEEKAY AXIFLEX PIPE COUPLINGS

- Non axial restraint pipe coupling system for joining most plain end pipe materials
- Corrosion resistant design - 100% rubber lined
- Suitable for joining plastics and GRP
- Low radial loading
- Allows generous pipe tolerances and axial movements
- Combines high strength with flexibility
- Exceptionally close nesting of pipes and installation in areas of limited access
- Comprehensive system includes straight, stepped, reducing and repair couplings and flange adaptors



- Sizes 48mm – 4000mm
- Working Pressures up to PN25 (depending on diameter)
- Casings in stainless or coated steel
- Gaskets in EPDM, NBR or Viton
- Can be manufactured to suit any pipe OD
- Comprehensively approved for marine, civil and industrial applications
- In global use for over 25 years in all environments and service conditions

- A modern approach to the joining of plain ended pipes, utilising materials of the highest quality in a weight, space, time and cost saving combination
- AXIFLEX Pipe Couplings have been used all over the world for over a quarter of a century as a first choice permanent pipe joining method



AXIFLEX PIPE COUPLINGS

The Teekay Pipe Coupling System is a tried and tested pipe joining method. **Axiflex Couplings** are manufactured from fully certificated raw materials produced to our specification to enable us to offer products which combine strength and flexibility.

The Teekay **Axiflex Coupling** has a one-piece rubber sealing sleeve. Therefore the pipe media never come into contact with the metallic components of the coupling.

Teekay **Axiflex Couplings** are light in weight, quick to install with simple tools, and can be used with all types of pipe materials.

On site, pipes may be cut to length and joined (providing the pipe ends are clean) with little preparation. This even includes joining two different pipe materials.

Teekay **Axiflex Couplings** leave our works pre-set and ready to install. There are no loose parts, and the screws are positioned on one point of the coupling circumference. These may in turn be positioned on any point of the pipe circumference to suit the installation conditions.

It is not necessary to have all-round accessibility to the pipe.

The design of the Teekay **Axiflex Coupling** is very streamlined. The overall outside diameter is little more than the pipe itself. Trenches can be made narrower, and the couplings may be wrapped easily after installation.

Because the screws on Teekay **Axiflex Couplings** tighten circumferentially with low radial loading they will accept large tolerances on pipe outside diameters and will not crush or damage soft pipe materials if installed correctly.

They will round out against a hard pipe material or pull a soft pipe material into round. The variable width of the couplings ensures that expansion and contraction, angular deflection and even the forming of long radius curves may be accommodated.

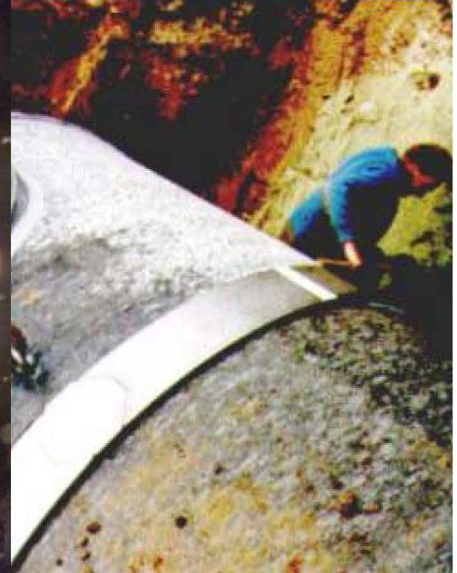
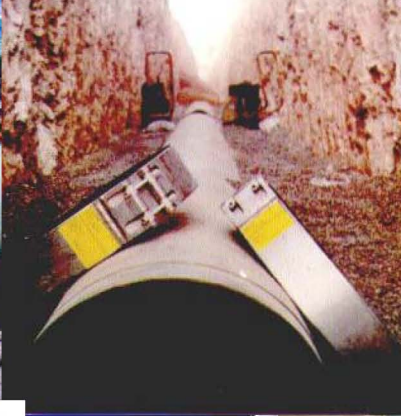
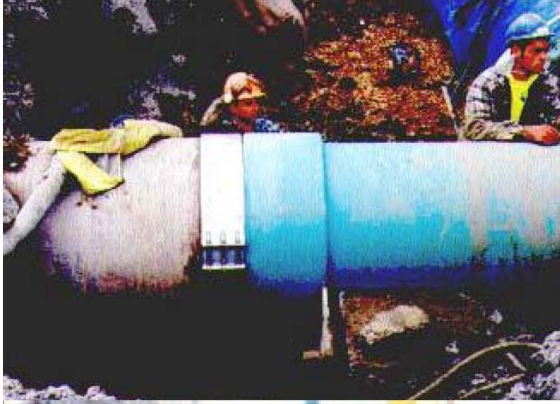
Each pipe may be removed from a Teekay system after installation (where necessary for repair or replacement) without dislodging any other pipes.

Teekay **Axiflex Couplings** may be used repeatedly for temporary applications.

Since there are no "non-standard" sizes in our range, any size between 38mm (1½") – 4000mm (160") nominal bore may be ordered in metric or imperial units on an equally quick delivery.

Couplings of different sizes can often be nested inside each other keeping volume and weight to the minimum for economical shipping.







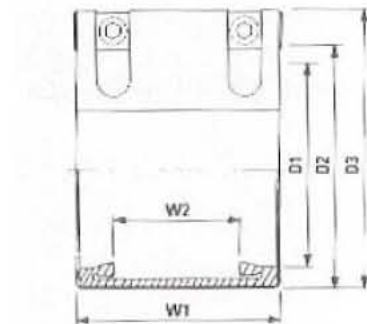
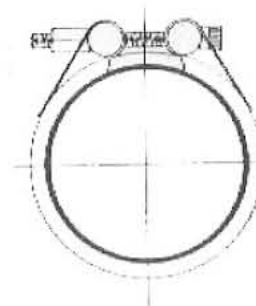
TEEKAY AXIFLEX COUPLINGS

DIMENSIONAL DETAILS

| D1 PIPE OUTSIDE DIAMETER | PIPE NOMINAL BORE | W1 COUPLING WIDTH | | | | | W2 GAP BETWEEN SEALING LIPS | D2 COUPLING O.D. = (D1 + D2) | D3 OVERALL COUPLING O.D. = (D1 + D3) | NO. OF SCREWS | APPROXIMATE WEIGHT KGS | ALLOWABLE TOLERANCE ON PIPE O.D. + / - |
|--|-------------------------|-------------------|-----------|-----------|-----------|-----------|-----------------------------------|---------------------------------------|---|------------------|------------------------------|---|
| | | 85 mm | 110 mm | 140 mm | 210 mm | 310 mm | | | | | | |
| 48mm | 50 | ✓ | | | | | 42 | 20 | 39 | 2 | 1.0 | 1.5 |
| TEEKAY AXIFLEX COUPLINGS CAN BE MANUFACTURED TO SUIT ANY PIPE OUTSIDE DIAMETER WITHIN THIS RANGE | 75 | ✓ | | | | | 42 | 20 | 39 | 2 | 1.3 | 2 |
| | 100 | ✓ | ✓ | | | | 42/67 | 20/22 | 39/44 | 2/2 | 1.6/2.0 | 2/2 |
| | 150 | | ✓ | ✓ | | | 67/80 | 22/22 | 44/44 | 2/2 | 2.4/4.0 | 2.5/2.5 |
| | 200 | | ✓ | ✓ | ✓ | | 67/80/120 | 22/22/42 | 44/44/72 | 2/2/2/3 | 3.0/4.5/7.9 | 3/3/3 |
| | 250 | | ✓ | ✓ | ✓ | | 67/80/120 | 22/22/42 | 44/44/72 | 2/2/2/3 | 3.4/5.0/8.6 | 3/3/3 |
| | 300 | | ✓ | ✓ | ✓ | ✓ | 67/80/120/220 | 22/28/42/42 | 44/58/72/72 | 2/2/2/3/4 | 3.8/6.0/9.7/17.3 | 3/4/5/5 |
| | 350 | | | ✓ | ✓ | ✓ | 80/120/220 | 28/42/42 | 58/72/72 | 2/2/3/4 | 7.1/10.7/18.4 | 4/5/5 |
| | 400 | | | ✓ | ✓ | ✓ | 80/120/220 | 28/42/42 | 58/72/72 | 2/2/3/4 | 8.0/12.9/20.1 | 4/5/5 |
| | 450 | | | ✓ | ✓ | ✓ | 80/120/220 | 28/42/42 | 58/72/72 | 2/2/3/4 | 9.0/14.0/21.8 | 4/5/5 |
| | 500 | | | ✓ | ✓ | ✓ | 80/120/220 | 28/42/42 | 58/72/72 | 2/2/3/4 | 9.5/16.1/26.6 | 4/5/5 |
| | 600 | | | ✓ | ✓ | ✓ | 80/120/220 | 28/42/42 | 58/72/72 | 2/2/3/4 | 11.0/17.3/30.5 | 4/6/6 |
| | 700 | | | ✓ | ✓ | ✓ | 80/120/220 | 28/42/42 | 58/72/72 | 2/3/4 | 12.5/22.5/34.4 | 4/6/6 |
| | 800 | | | ✓ | ✓ | ✓ | 80/120/220 | 28/42/42 | 58/72/72 | 2/3/4 | 14.4/25.1/38.4 | 4/6/6 |
| | 900 | | | ✓ | ✓ | ✓ | 80/120/220 | 28/42/42 | 58/72/72 | 2/3/4 | 15.8/27.6/42.3 | 4/6/6 |
| | 1000 | | | ✓ | ✓ | ✓ | 80/120/220 | 28/42/42 | 58/72/72 | 2/3/4 | 16.8/30.2/46.2 | 4/6/6 |
| | 1100 | | | ✓ | ✓ | ✓ | 80/120/220 | 28/42/42 | 58/72/72 | 2/3/4 | 18.0/38.3/50.1 | 4/6/6 |
| | 1200 | | | ✓ | ✓ | ✓ | 80/120/220 | 28/42/42 | 58/72/72 | 2/3/4 | 19.5/41.3/54.0 | 4/6/6 |
| | 1300 | | | | ✓ | ✓ | 120/220 | 42/42 | 102/102 | 6/8 | 47.7/63.9 | 10/10 |
| | 1400 | | | | ✓ | ✓ | 120/220 | 42/42 | 102/102 | 6/8 | 50.5/67.9 | 10/10 |
| | 1500 | | | | ✓ | ✓ | 120/220 | 42/42 | 102/102 | 6/8 | 53.2/71.8 | 10/10 |

| D1 PIPE OUTSIDE DIAMETER | PIPE NOMINAL BORE | W1 COUPLING WIDTH | | | | | W2 GAP BETWEEN SEALING LIPS | D2 COUPLING O.D. = (D1 + D2) | D3 OVERALL COUPLING O.D. = (D1 + D3) | NO. OF SCREWS | APPROXIMATE WEIGHT KGS | ALLOWABLE TOLERANCE ON PIPE O.D. + / - |
|---|-------------------------|-------------------|-----------|-----------|-----------|-----------|-----------------------------------|---------------------------------------|---|------------------|------------------------------|---|
| | | 85 mm | 110 mm | 140 mm | 210 mm | 310 mm | | | | | | |
| TEEKAY AXIFLEX COUPLINGS CAN BE MANUFACTURED TO SUIT ANY PIPE OUTSIDE DIAMETER WITHIN THIS RANGE | 1600 | | | | ✓ | ✓ | 120/220 | 42/42 | 102/102 | 6/8 | 56.5/75.7 | 10/10 |
| | 1700 | | | | ✓ | ✓ | 120/220 | 42/42 | 102/102 | 6/8 | 59.8/79.6 | 10/10 |
| | 1800 | | | | ✓ | ✓ | 120/220 | 42/42 | 102/102 | 6/8 | 62.3/83.5 | 10/10 |
| | 1900 | | | | ✓ | ✓ | 120/220 | 42/42 | 102/102 | 6/8 | 65.2/87.5 | 10/10 |
| | 2000 | | | | ✓ | ✓ | 120/220 | 42/42 | 102/102 | 6/8 | 68.1/91.4 | 10/10 |
| | 2100 | | | | ✓ | ✓ | 120/220 | 102/42 | 102/102 | 6/8 | 70.9/95.3 | 10/10 |
| | 2200 | | | | ✓ | ✓ | 120/220 | 102/42 | 102/102 | 6/8 | 73.9/99.2 | 10/10 |
| | 2300 | | | | ✓ | ✓ | 120/220 | 102/42 | 102/102 | 6/8 | 75.9/103.1 | 10/10 |
| | 2400 | | | | ✓ | ✓ | 120/220 | 102/42 | 102/102 | 6/16 | 79.8/118.4 | 10/20 |
| | 2500 | | | | ✓ | ✓ | 120/220 | 102/102 | 102/102 | 12/16 | 87.5/122.3 | 20/20 |
| | 2600 | | | | ✓ | ✓ | 120/220 | 102/102 | 102/102 | 12/16 | 92.9/126.3 | 20/20 |
| | 2700 | | | | ✓ | ✓ | 120/220 | 102/102 | 102/102 | 12/16 | 96.2/130.2 | 20/20 |
| | 2800 | | | | ✓ | ✓ | 120/220 | 102/102 | 102/102 | 12/16 | 98.7/134.1 | 20/20 |
| | 2900 | | | | ✓ | ✓ | 120/220 | 102/102 | 102/102 | 12/16 | 109.6/138.0 | 20/20 |
| 3048mm | 3000 | | | | ✓ | ✓ | 120/220 | 102/102 | 102/102 | 12/16 | 121.1/141.9 | 20/20 |

LARGER DIAMETERS ARE AVAILABLE ON REQUEST





AXIFLEX MATERIAL SELECTION GUIDE

| Type | I | II | IV | V | VI |
|-----------|--------------------------------------|-------------------------|-------------------------|-----------------------------------|-----------------------------------|
| Casing | AISI 304 DIN 1.4301 | AISI 304 DIN 1.4301 | AISI 316L DIN 1.4404 | *Coated High Strength Steel | *Coated High Strength Steel |
| Fasteners | Alloy Steel Zinc + PTFE Coated | AISI 316L DIN 1.4404 | AISI 316L DIN 1.4404 | Alloy Steel Zinc Coated | AISI 316L DIN 1.4404 |
| Gasket | EPDM/NBR/ Viton | EPDM/NBR/ Viton | EPDM/NBR/ Viton | EPDM/NBR/ Viton | EPDM/NBR/ Viton |

*** Galvanized, Rilsan, PVC or Epoxy (Scotchkote)**

Ordering Information:

| | Quantity | Model | Type | Gasket | Pipe OD |
|-----------------|-----------|----------------|----------|-------------|--------------|
| Example: | 18 | Axiflex | I | EPDM | 635mm |