



# **TEEKAY BUILD COUPLINGS QUALITY**

## **BUILD QUALITY ISSUES AFFECT**

- Life of product
- Corrosion resistance
- Installation time and cost
- Maintenance schedules
- Repeated use

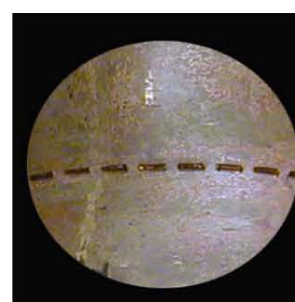
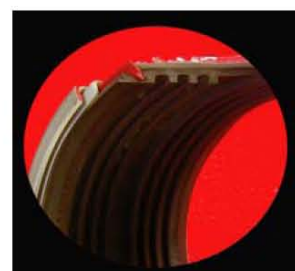
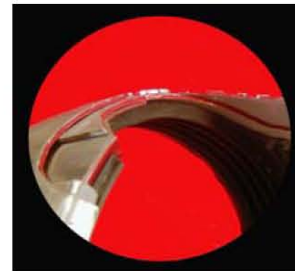


## **BUILD QUALITY ELEMENTS**

- Casings
- Gaskets
- Lockparts
- Anchor Rings
- Packaging

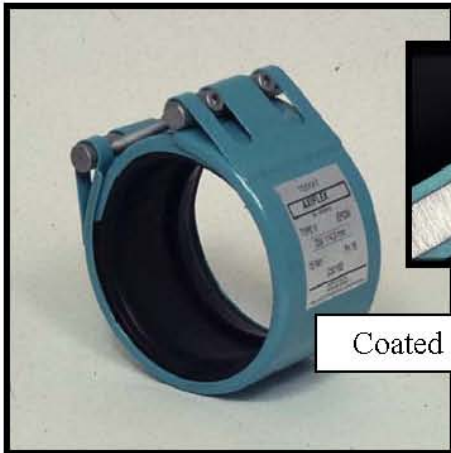
**BUILD QUALITY ISSUES are NOT covered by international standards or marine approvals, yet they are probably the major consideration for the designer, installer and client in selecting the most suitable pipe coupling for a specific application.**

Life	Corrosion	Installation	Maintenance	Repeated Use	
•	•	•	•	•	<b>CASINGS</b>
•				•	Patented double casing available for resistance against yield of the steel at high pressure – superb shock resistance
		•	•	•	Fully insulated fire sleeve option, factory fitted, ready to use
•	•	•	•	•	Permanent fire resistance by patented system requiring no maintenance and no special installation procedures
•	•		•		TIG seam welding of tensioned parts - fully passivated against crevice corrosion and resistant to shock and vibration
•				•	Unique beam effect – as pressure increases, the casing actually compresses the gasket more (other couplings bow outwards under pressure)
•	•		•		Coated steel casings have fusion bonded coatings which are 300 µm thick.
•	•	•	•	•	<b>GASKETS</b>
•				•	Simple high density gasket profile for effective sealing
•			•	•	High ratio of volume of material relative to the space to be sealed for long term efficiency
•			•	•	Keeps shape over time, temperature, vibration and shock
•			•	•	Can give a measurable 200+ year life expectancy
		•	•	•	Smooth gasket interior avoids snagging on pipe ends
•	•				Patented end seals encapsulate the anchor rings, seal them against corrosion and dampen shock and vibration
		•		•	Encapsulated anchor rings protect the installer from sharp edges
•	•	•	•	•	<b>LOCKPARTS</b>
•	•		•	•	Solid retaining bars
•				•	Retaining bars are spot faced – there are no stress points on the screw heads
		•	•	•	Dry lubrication ensures permanent grease and dirt free tightening of threaded parts
		•	•	•	No galling or seizing of threads – crucial for repeated usage
•	•		•	•	Inert coating of dissimilar metals ensures protection against galvanic corrosion
•	•	•	•	•	<b>ANCHOR RINGS</b>
•	•		•	•	Anchor rings protected by patented end seals
•	•		•	•	Sealed anchor rings prevent corrosion of both the anchor ring AND pipe surface
•			•	•	End seals reduce stress and dampen vibration and shock around the anchor rings ensuring uniform, fatigue free, long term performance
		•		•	Rings are sharpened for efficient “bite” on the pipe material
		•	•	•	When the coupling is loosened, the end seals help the disengagement of the anchor ring from the pipe surface without damage to the pipe or coupling – crucial for re-using
•	•	•			<b>PACKAGING</b>
•	•	•			All couplings are individually bagged or wrapped
•	•	•			Couplings are kept clean from factory to point of installation
		•			Threaded parts are kept clean for perfect tightening





# TEEKAY BUILD QUALITY



Coated steel cross section



Passivated TIG seam welding



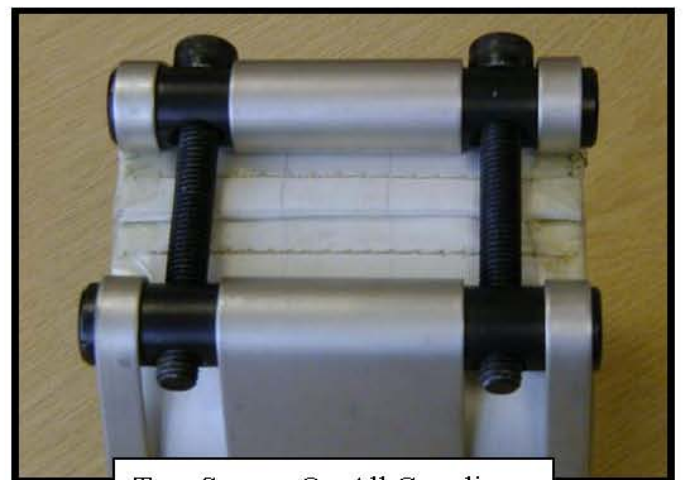
Corrosion Protected Anchor rings



Internal Fire Sleeve



Solid Bars



Two Screws On All Couplings



Unique Corrosion Protection End Seals



Couplings Supplied In Bags

# SUMMARY



## **Reasons to Use Teekay Pipe Couplings**

- Permanent pipe joining system for virtually all pipe materials
- Wide range of corrosion resistant materials to suit most applications
- Quick and easy to install
- Virtually no pipe preparation required
- No loose parts - ready assembled and pre-set for use
- No special tools required (couplings are tightened with a torque wrench)
- No special health and safety requirements
- Non standard sizes are available at no extra premium
- Comprehensive product range

## **Installation Advantages of Teekay Pipe Couplings**

- Lighter in weight
- Wider tolerance on pipe diameter
- Accommodate pipe ovality
- Do not crush thin wall or plastic or soft metallic pipe materials
- More tolerance on pipe installation
- Pipes can be placed closer together
- Pipes can be placed closer to walls, ceilings and corners
- No welding or hot working
- Do not require NDT after installation
- Perfect for areas of limited access
- Streamlined and easy to wrap or insulate
- They are re-usable

## **Build Quality of Teekay Pipe Couplings**

- No spot welds on tensioned components
- Two screws throughout the range
- All tensioning bars are solid steel
- No galvanic corrosion between dissimilar materials
- All couplings are 100% rubber lined
- Anchor teeth protected against external corrosion
- Non corroding rubber central register available
- Fire sleeves are integrated internal components, permanent and maintenance free
- All welds are thoroughly cleaned and passivated
- Threads are free of grease
- Highest quality certificated raw materials with full traceability
- Couplings are individually bagged